



Sales brochure





Sales brochure



## Individual solutions for a global market

In the third millennium, the lift is a true means of transport, and the car or cab is its passenger compartment. The car is charged with the task of making transport safe and comfortable. Since 1948, Verri has been making lift cars that unite technology and design in a synthesis of quality and safety. Today, the company plays a leading role within Sematic Group. Thanks to its attention to detail, its finishes, its traditions and the across-the-board expertise that all of the companies in the group share, Verri is able to offer car package solutions that meet the most modern of market requirements. This is a unique form of added value, which only Verri can offer.

## Passion for design and details

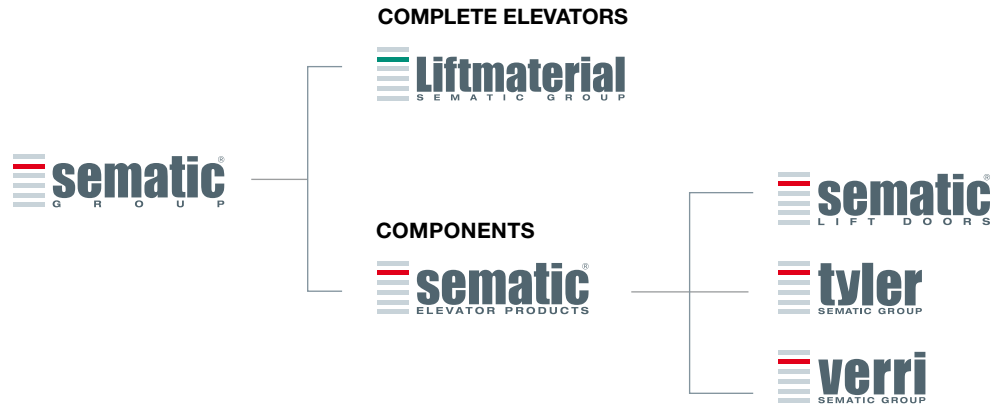
Verri has always pursued excellence: both in terms of technology, with cars that can be integrated into the most cutting-edge projects, and in terms of design, with an all-Italian commitment to getting the details and the styling just right. Over the years, the designs produced in the plant in Suisio have been installed in high-complexity buildings, such as high-rises, and in environments that have tested the resistance of the materials and the consistency of their performance over time, such as cruise ships. These challenges have been overcome, thanks to Verri's passion for design and its exceptional expertise in production – two factors that have always co-existed harmoniously within the company.

## From the norm to the exception

Today, the product portfolio is able to fulfil the widest array of design and installation projects, encompassing everything from the modernisation of existing systems and the achievement of maximum comfort in dynamic environments such as high-rise structures or hospitals, to industrial and goods-handling environments and modern design and construction contexts, where materials such as glass and complex moulds are used – time after time, Verri has the right solution to provide the perfect passenger compartment for vertical transport.



# GROUP INDUSTRIAL STRUCTURE



4



## AMERICA

### USA

Tyler Elevator Products  
a division of Sematic USA, Inc

### Mexico

Sematic Mexico

## EUROPE

### Italy

Sematic spa  
Verri srl  
Computec srl

### United Kingdom

Sematic UK Ltd

### Germany

LM Liftmaterial GmbH

### Hungary

Sematic Hungária kft

### Turkey

Sematic Turkey

## ASIA

### China

Sematic Elevator Products  
(Suzhou) Co., Ltd  
Sematic Hong Kong Ltd

### Singapore

Sematic Singapore Pte Ltd

### India

Sematic RE Elevator  
Products (India) Pvt Ltd

## Integrated technologies for elevators

The support of the network of companies in the Sematic Group bolsters Verri's products yet further: the cars that come out of this wellspring of expertise and experience are endowed with the technological features of quality and safety that have always been the trademark of all Sematic Group lift components.



5










Moreover, the integration of the group's know how allows Verri's cars to deliver the highest standards whether deployed as stand-alone units or in combination with Sematic Lift Doors, creating perfect car packages every time.



## The right solution for every situation

The solutions offered by Verri and Sematic resolve a myriad of installation problems in terms of space and utilization. The Group's products range from cabins and doors for residential and small-scale commercial properties to cabins and doors that have been designed and built for large-scale, complex environments. The technology used for high-rise and heavy-duty solutions makes the most of the Group's consolidated experience. Verri and Sematic have what it takes to satisfy the superior performance levels demanded by these applications for standardized or customized cabins and doors. The basic structures can be enhanced by increasingly complex technical options and design features that serve both functional and aesthetic purposes and can meet a wide range of design requirements.



APPLICATIONS	DESTINATION					
	PASSENGERS		GOODS		SPECIAL USES	
	DOORS	CARS	DOORS	CARS	DOORS	CARS
RESIDENTIAL 	2000 B 2000 C	OPPORTUNITY or ADAPTA	2000 B-G	CARGO	2000 SWS	CUSTOM
OFFICES 	2000 B 2000 C	OPPORTUNITY or ADAPTA	2000 B-G	CARGO	2000 SWS 2000 R	CUSTOM PANOR./CUSTOM
HIGH RISE 	2000 B-HR	VARIO	2000 B-G	CARGO	2000 HD	CARGO
HOSPITALS 	2000 B	VARIO	2000 B-G	ADAPTA	2000 B-G	ADAPTA
TRANSPORT 	2000 B	ADAPTA	2000 HD 2000 B-G	CARGO	2000 SWS	CUSTOM
MODERNIZATION 	2000 C-MOD	OPPORTUNITY EASY				
HOTELS 	2000 B	VARIO	2000 B-G	ADAPTA	2000 R	PANORAMIC CUSTOM
SHOPPING CENTERS 	2000 B	ADAPTA	2000 B-G	ADAPTA	2000 HD 2000 R	CARGO PANOR./CUSTOM
INDUSTRIAL 			2000 B-G	CARGO	2000 HD	CUSTOM CARGO

## LIFT CAR WITH INTEGRATED SLING

## PRODUCT LINES



### EASY

The right choice for modernizations. Lift car with integrated car sling in a solution:

- Light
- Flexible
- Reliable
- Comfortable
- With modern design
- Conform to standards

*See pages 22-25*



### VARIO

The Vario product line has been designed to offer a wide range of finishes, on a strong steel wall structure.

*See pages 10-11*



### ADAPTA

Adapta offers high flexibility, precision mounting of the self-bearing walls and an excellent range of standard finishes.

*See pages 12-13*



## OPPORTUNITY

The special feature of Opportunity lift car is the light construction. The mix between a new design and flexibility makes the Opportunity lift car elegant and functional.

*See pages 14-15*



## CARGO

Cargo cabin was specifically studied for goods transportation. Ideal in applications such as car lifts, heavy duties and situations in which robustness is a must.

*See pages 16-17*



## PANORAMIC

Panoramic lift cabins represent the top of customization level. A wide range of design, shapes, materials, finishes, optional extras are available to satisfy even the most demanding aesthetics needs.

*See pages 18-21*



Verri

VARIO



Wide choice of materials

## HIGHLIGHTS

The Vario product line has been designed to offer a wide range of finishes, on a strong steel wall structure.

## FINISHES

- Wall marble claddings in different colours and thicknesses
- Wood veneered finishes walls cladding make your cabin a prestigious product
- Coloured glass wall cladding available in different colours
- Walls in panoprey or plastic laminate in different choices
- Complete range of satined and rigidized stainless steel wall claddings
- Floor available in different colours
- Wear resistant materials for floor cladding
- Composite stones for floor cladding
- Quality sheet steel ceiling and lightings with different lighting solutions

## OPTIONAL EXTRAS

- Wide range of handrails and bumper rails
- Stainless steel skirting, satined or polished
- Half wall/full wall/panel mirrors
- “Style” glass, entirely framed with satin stainless steel
- Modular car top railing 700mm and 1100mm high can be applied on each side of the cabin roof
- EN-81 compliant trap door with a special locking mechanism
- Low decibel exhaust or blowing fan
- Folding seat to be fixed on walls or embedded with stainless steel grit 180-240 niche
- Anti-drumming to make the cabin sound proof



HOTELS



HOSPITALS



HIGH RISE



Any kind of finishes on a strong wall structure suitable for demanding architectural solutions

11

DOORS SUGGESTED FOR THIS CABIN

> 2000 B > 2000 B-HR



## HIGHLIGHTS

Adapta offers high flexibility, precision mounting of the self-bearing walls and an excellent range of standard finishes. Painted steel with a wide range of colors on request

## FINISHES

- Traditional and new skinplate colours
- Complete range of rigidized stainless steel sheets.
- Strong and flexible floors and claddings
- Floor available in different colours
- Wear resistant materials for floor cladding
- Composite stones for floor cladding
- Quality sheet steel ceiling and lightings with different lighting solutions

## OPTIONAL EXTRAS

- Wide range of handrails and bumper rails
- Satined or polished stainless steel skirting
- Half wall/full wall/panel mirrors
- “Style” glass, entirely framed with satin stainless steel
- Modular car top railing 700mm and 1100mm high can be applied on each side of the cabin roof
- EN-81 compliant trap door with a special locking mechanism
- Low decibel exhaust or blowing fan
- Folding seat to be fixed on walls or embedded with stainless steel grit 180-240 niche
- Anti-drumming to make the cabin sound proof

Verri | ADAPTA



Self bearing car walls



RESIDENTIAL



OFFICES



HOSPITALS



HOTELS



TRANSPORT



SHOPPING  
CENTERS

High flexibility and  
precision mounting  
car walls, featuring  
an excellent range of  
standard finishes

13

DOORS SUGGESTED FOR THIS CABIN

> 2000 B > 2000 C > 2000 B-G



## HIGHLIGHTS

The special feature of Opportunity lift car is the light construction. The mix between a new design and flexibility makes the Opportunity lift car elegant and functional

## FINISHES

- Load bearing design in different Skinplate choices
- Stainless steel AISI 304 in different choices
- Panoprey claddings in different choices.
- Plastic laminate in different colour choices
- Painted steel floor structure lined in different choices.
- Composite stones for floor cladding

## OPTIONAL EXTRAS

- White Skinplate or satined stainless steel AISI 304 suspended ceiling
- Easy to mount, EN81 and EN81-70 compliant handrail supplied in polished AISI 304 stainless steel
- Trap door EN-81 compliant with a special locking mechanism
- Possible application of low decibel exhaust or blowing fan
- Modular car top railing 700mm and 1100mm high can be applied on each side of the cabin roof
- Anti-drumming to make the cabin sound proof
- "Style" glass, entirely framed with satin stainless steel
- Optional mirror on half rear wall easy to apply and replace

Verri

OPPORTUNITY



Standard solution for  
commodity market





MODERNIZATION



RESIDENTIAL



OFFICES

Optimized set of finishes  
and optional extras  
meeting most of the  
market's needs in a  
quickly available product

15

DOORS SUGGESTED FOR THIS CABIN

> 2000 B > 2000 C > 2000 C-MOD



## HIGHLIGHTS

Cargo cabin was specifically studied for goods transportation. Ideal in applications such as car lifts, heavy duties and situations in which robustness is a must

## FINISHES

- Walls available in zinc plated steel, painted steel, traditional and new plastic skinplate colours, AISI 304 stainless steel
- Floor cladding in different colours
- Quality sheet steel ceiling and lightings with different lighting solutions

## OPTIONAL EXTRAS

- Wide range of handrails and bumper rails
- Satined stainless steel skirting
- Low decibel exhaust or blowing fan
- Folding seat to be fixed on walls or embedded with stainless steel grit 180-240 niche
- PVC Bumpers
- EN-81 compliant trap door with a special locking mechanism
- Modular car top railing 700mm and 1100mm high can be applied on each side of the cabin roof
- Anti-drumming to make the cabin sound proof

Verri

CARGO



Great cabin for goods transportation



RESIDENTIAL



OFFICES



HIGH RISE



TRANSPORT



SHOPPING  
CENTERS



INDUSTRIAL



The ideal solution for huge applications and heavy duties that is able to combine strong steel structure and design

17

DOORS SUGGESTED FOR THIS CABIN

> 2000 B-G > 2000 HD



Verri

PANORAMIC  
CUSTOM

EN-81

From desire to design

## HIGHLIGHTS

Panoramic lift cabins represent the top of customization level. A wide range of design, shapes, materials, finishes, optional extras are available to satisfy even the most demanding aesthetics needs.

## FINISHES

- Safety glass wall(s)
- Wall available in painted metal, skinplate, satin, polished, decorated, coloured, stainless steel, plastic laminate, marble, special stones or wood veneer
- Quality sheet steel ceiling and lightings with different lighting solutions, designed to accept different kind of car door operators and accessories
- Floor claddings: composite stones, "classic imperial floor cladding", "vinyl and special floor cladding", "rubber floor cladding", marble, special stones, wood veneer

## OPTIONAL EXTRAS

- Satin or polished stainless steel frame and skirting
- Polished stainless steel handrail
- Apron
- Fan
- Control operating panel
- Anti-drumming
- Through or adjacent entrances
- External wall claddings
- Integrated car sling
- Canopies
- Mirror
- Accessories (tip-up seat, notice board, air conditioning and many more)



RESIDENTIAL



OFFICES



TRANSPORT



SHOPPING  
CENTERS



HOTELS



Expand your  
imagination, we'll  
bring it to reality with  
industrial production  
and craftsmanship care

19

DOORS SUGGESTED FOR THIS CABIN

> 2000 R > 2000 B-HR > 2000 SWS

# CUSTOM

Custom cabins are one-of-a-kind solutions that make your ideas real. Thanks to our long experience and expertise in cabin manufacturing we help you find the best solutions, in terms of choice of materials, finishes and optional extras, to realize your projects, understanding what is need to be done in order to make your cabin unique.

All the smallest details of Verri cabins are studied and designed with special care, leaving nothing to chance from a technical, functional and aesthetic viewpoint. We provide you with high-quality consultancy services from the planning stage to the final delivery, developing your cabin, according to your specifications and together with you.

We use a wide range of materials, from plastic laminate and marble to coloured glasses and composite stones, able to satisfy your every special need and thanks to our production processes and manufacturing technologies, we can offer you cutting edge products with the best possible quality.

Furthermore we can provide cabins designed according to the most important international standards including, for example, special solutions for different applications that satisfy even the most demanding testing requirements.







The right choice for modernizations. Lift car with integrated car sling in a solution:

- Light
- Flexible
- Reliable
- Comfortable
- With modern design
- Conform to standards

### HIGHLIGHTS

- Fast and easy assembly sequence
- Application range from 240 to 1000kg duty load
- Modularity in car dimensions with steps of 1mm
- Reduced distance from upper roof edge to upper crosshead edge (125mm)
- Only 515mm from internal car floor to buffer
- Reduced pit 900mm
- Possible counterweight frame width 60mm minimum

### FINISHES

- Walls available in traditional RAL colours and new skinplate colours, plastic laminate, stainless steel
- Floor cladding in different colours; composite stones available too
- Quality sheet steel ceiling and lightings with different lighting solutions

### OPTIONAL EXTRAS

- Stainless steel skirting, satined or polished
- Wide range of handrails and bumper rails
- Modular car top railing 700mm and 1100mm high can be applied on each side of the cabin roof

Verri

EASY



Lift car with  
integrated sling





MODERNIZATION



The compact and elegant solution for modernizations and shafts with reduced space availability

23

DOOR SUGGESTED FOR THIS CABIN

> 2000 C-MOD

# EASY

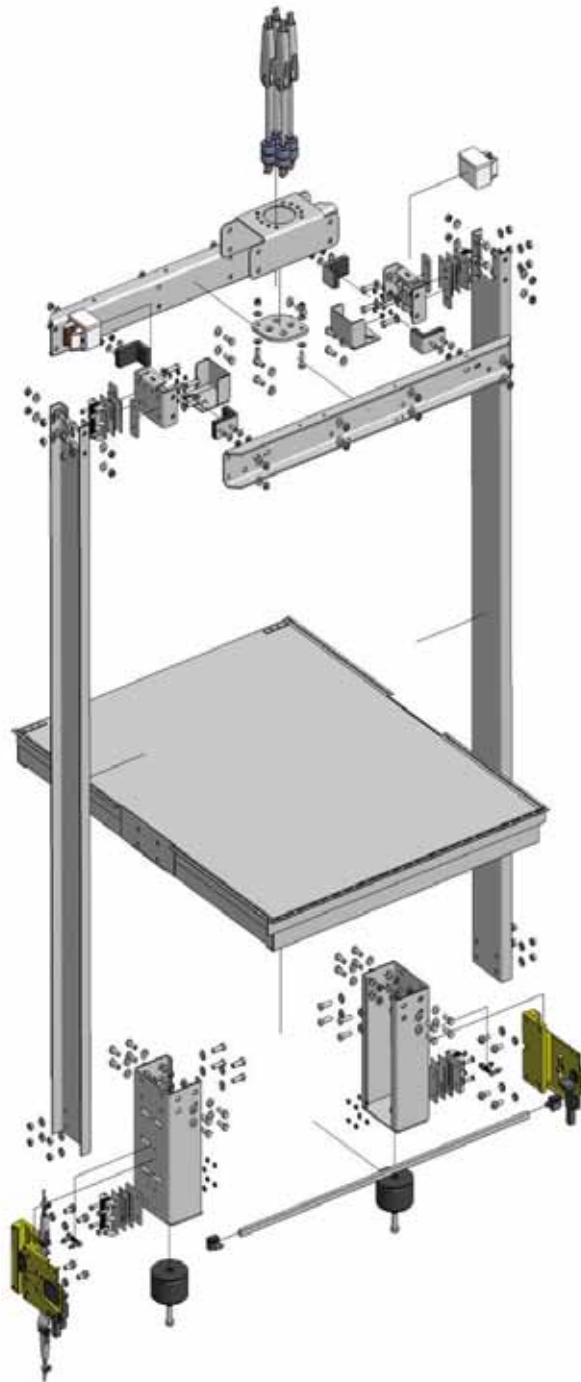
Easy is not just a cabin, it's a complete car and sling package that perfectly integrates into small shafts.

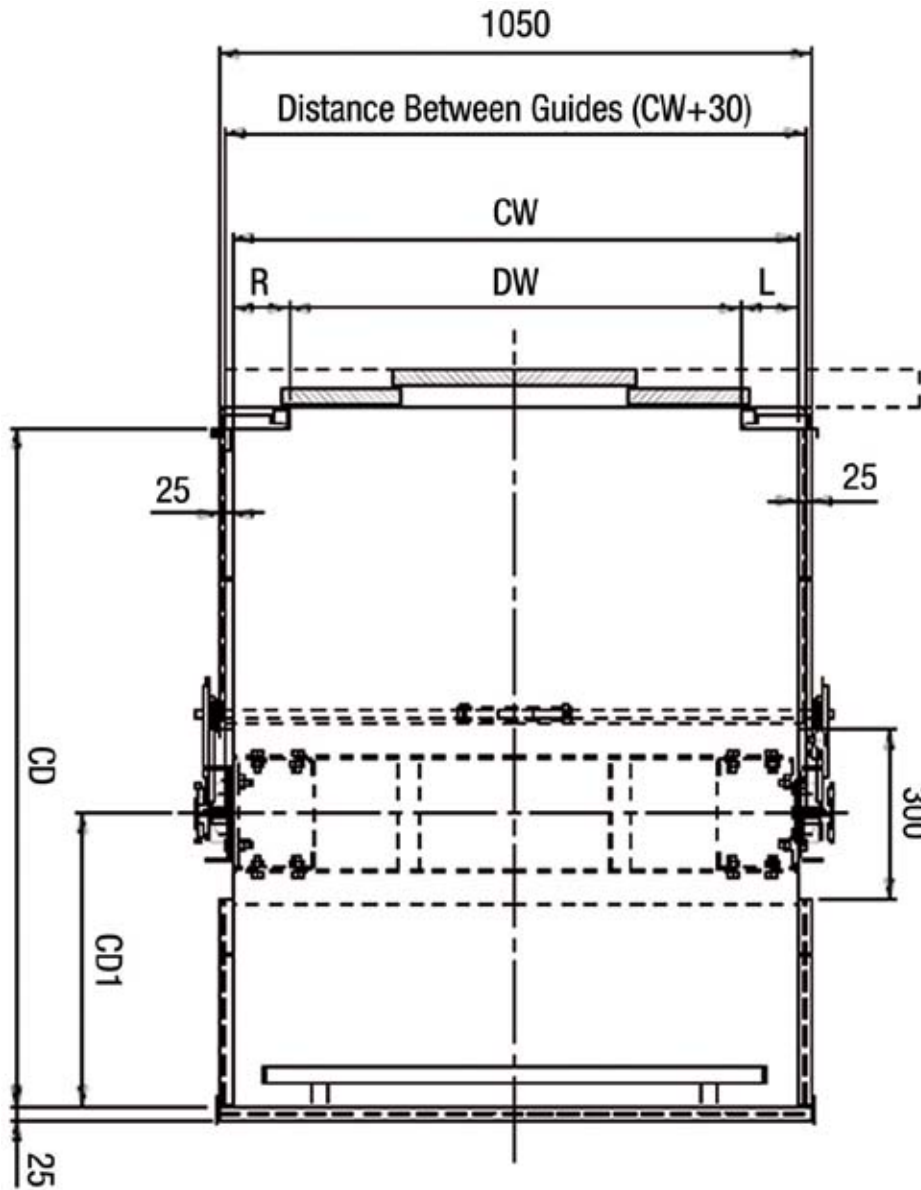
The peculiarity of this solution is that the distance between guides is just 30-40mm (depending on the cladding) more than the car width. This allows compact overall dimensions and therefore more space inside the cabin compared to the standard solutions.

Light, reliable and flexible, this product has no welded part. It is easy and quick to mount and last but not least, ideal for logistics.

## Reliability

- Metal sheet structure for light weight
- Only few components almost integrated in car platform
- Ropes or belts fixing
- Compact safety gear application
- No welded part
- Self-bearing car platform



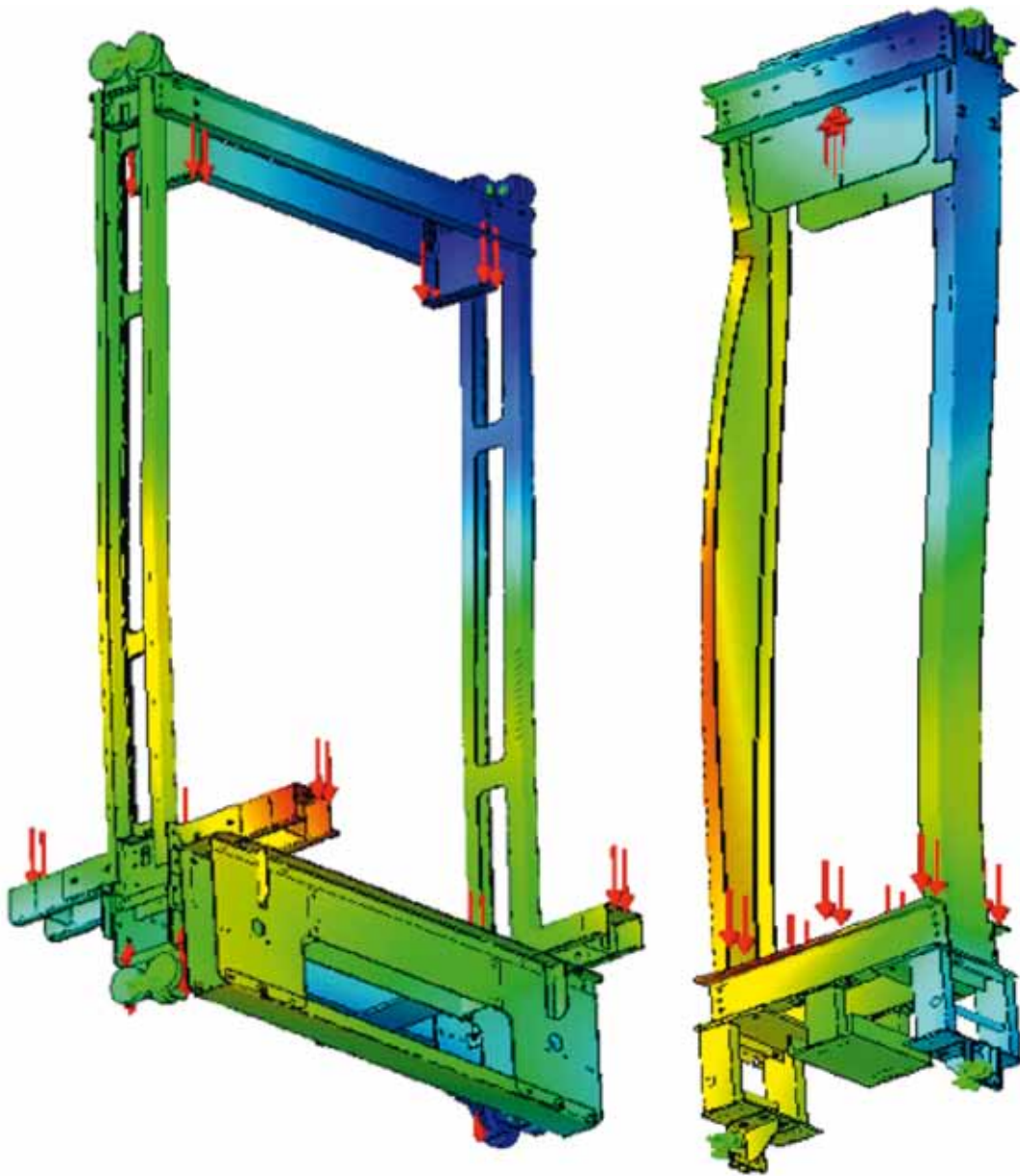


### Flexibility

Distance Between Guides = Car Width + 30mm for self-bearing cars, 40mm for plastic laminate claddings

25

CW = Car Width  
 CD = Car Depth  
 CD1 = distance between rear wall and sling center  
 DBG = Distance Between Guides  
 DW = Door Width



Verri offers a complete service concerning steelworks starting from analysis, check and realization of frames, counterweights, beams, brackets etc. The achieved experience allows us to realize simple hydraulic lifts up to big ones for 20 Tons 6:1 lifts.

Starting from June 2004 our company integrates another company of Sematic Group specialized in engineering and production of structural parts of elevators. The integration was quick since the cultures were similar for market (for export), product (in meeting customer requirements) and service.

The structural calculation and simulation (FEM) of car sling parts checked with a dimensional test, is getting more and more important, in order to offer the best solutions with respect of weight, shape and performance.

Our offer includes different steelwork solutions for a complete range of capacities, speeds and applications:

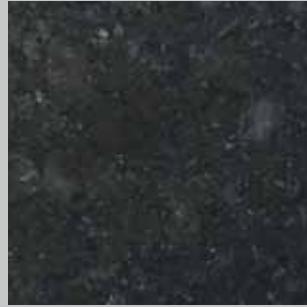
- instantaneous and progressive safeties
- gear raft and complete Steelworks solutions tailored to the customer
- complete range of "L" frames and hydraulic slings, including head pulleys and counterweight arrangements
- complete range of car slings for traction elevators, including counterweight arrangements and underslung application

Verri | Steelworks

Manufacturing of  
elevator structural parts



## FINISHES



### WALL FINISHES

A wide range of wall finishes in different materials:

- Skinplate
- Stainless steel
- Plastic laminate
- Panoprey
- Coloured glass
- Veneered wood
- Painted steel
- Marble

*See pages 30-39*

### FLOOR FINISHES

All the Verri floors are strong and flexible, manufactured to the size and design of the cabin. They are available in different materials:

- PVC
- Metal
- Composite stones

*See pages 40-43*

## ACCESSORIES



### CEILING and LIGHTING

The ceiling is an important part of the Verri cabin and can be:

- Designed and manufactured from quality sheet steel to meet the appropriate lift regulations
- Supplied with various lighting solutions to meet the required specifications
- Designed to accept various designs of car door operators and accessories

*See pages 44-47*



### HANDRAILS

Verri cabins can be equipped with different handrails, manufactured with the following materials:

- Aluminium
- Stainless steel
- Wood

*See pages 48-51*



## BUMPER RAILS

Wide range of bumper rails available to meet safety and aesthetical requirements. Materials available:

- Wood
- PVC
- Stainless steel

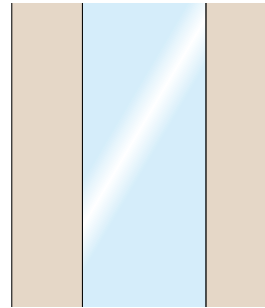
See pages 52-53



## SKIRTING

Verri skirting protects your cabin walls from collisions, impacts, kicks and abrasion. They can also serve as a special design element.

See page 54



## MIRROR and GLASS

Wide range of mirror executions specified as follows:

- on half wall
- full wall
- panels

To meet the requirements of the market Verri has developed a special concept of glass wall named "Style" framed entirely with satin stainless steel.

See pages 56-57



## OPTIONS and ACCESSORIES

Verri offers also additional options and accessories in order to meet a wide range of design requirements.

- Car top railing
- Trap door
- Blowing fan
- Folding seat
- Telephone box
- Anti-drumming

See pages 58-59

## Skinplate

The walls in *Skinplate* offer a further possibility to customize your lift cars. A wide range of colours is at your disposal

Available for

**EASY - ADAPTA - OPPORTUNITY - CARGO**



2-K001  
White 923



2-K010  
Aqua Green 614



2-K011  
Light Blue PPS14



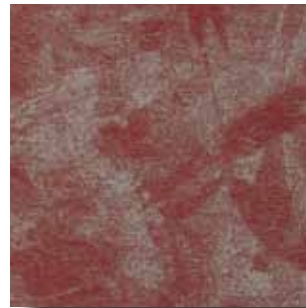
2-K012  
Beige DT30SMA



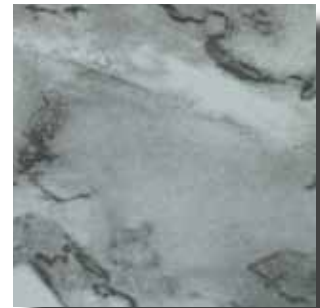
2-K013  
Spotted Light Blue PPS 30



2-K014  
Spotted Blue PPS 31



2-K015  
Spotted Red PPS 28



2-K016  
Spotted White PPS 51



2-K017  
White Striped PPS 3



2-K018  
Titanium F12PPS



2-K002  
Turtle Dove I113



2-K003  
Beige G1

30

# Wall finishes



EASY - ADAPTA - OPPORTUNITY - CARGO Available for



2-K004  
Light Blue 501



2-K005  
Blue U530



2-K006  
Grey U640



2-K008  
Leather DP4



2-K021  
Aluminum



2-K009  
Green 602



2-K019  
Orange

Stainless steel

The walls cladding can be chosen among a complete range of satined and rigidized stainless steels

Available for

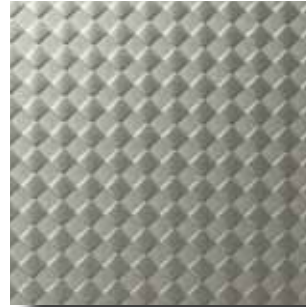
EASY - ADAPTA - OPPORTUNITY - CARGO - VARIO



2-S001  
Leather dec. 8



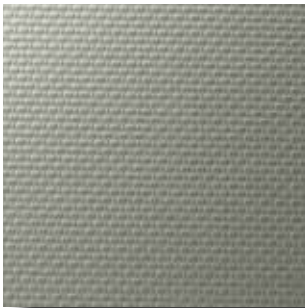
2-S002  
Leather D42



2-S003  
Raute D22



2-S004  
Linen dec. 9



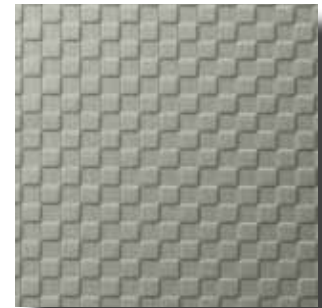
2-S005  
Linen D25



2-S006  
Canvas



2-S007  
Square dec. 16



2-S008  
Karo D21



2-S009  
Checks



2-S010  
Satin finish grit 240  
AISI 304 2B



2-S011  
Scotch Brite  
AISI 304 2B



2-S012  
Hairline  
AISI 304 2B

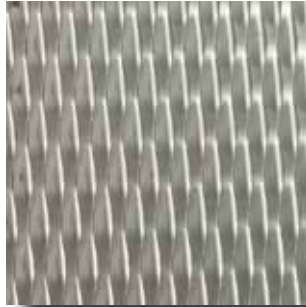
32

Wall finishes

EASY - ADAPTA - OPPORTUNITY - CARGO - VARIO Available for



2-S013  
5WL (AN5)  
AISI 304 2B



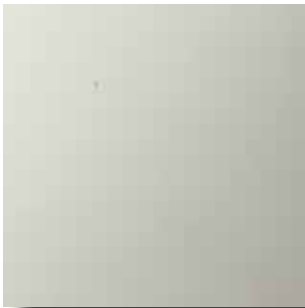
2-S028  
5WL (AN5) - AISI 304 2R  
(BA) thickness 1,2mm



2-S015  
2WL (AN2)  
AISI 304 2R (BA)



2-S016  
Inox mirror n°7  
AISI 304 2R (BA)



2-S017  
Inox super mirror n°8  
AISI 304 2R (BA)



2-S018  
Bronze mirror  
AISI 304 2R (BA)



2-S019  
Gold mirror  
AISI 304 2R (BA)



2-S021  
Satin charcoal  
AISI 304



2-S024  
Vibration  
AISI 304



2-S029  
Ice dec  
AISI 304 2R (BA)

Plastic Laminate

*Plastic Laminate on an 8 mm wooden board for fixing to the walls in different choices*

Available for

**EASY - OPPORTUNITY - VARIO**



2-L009



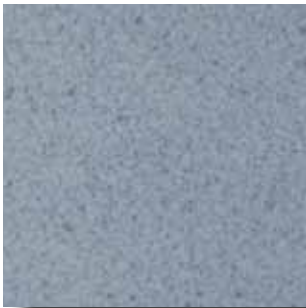
2-L010



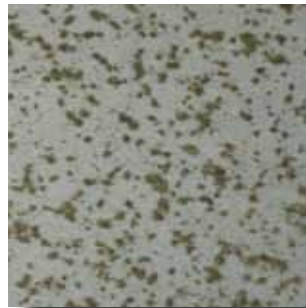
2-L012



2-L013



2-L014



2-L016



2-L017

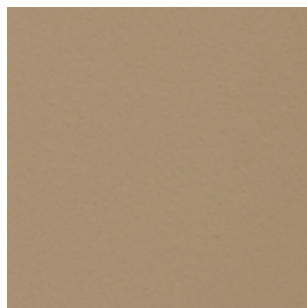
34

Panoprey (plastic laminate on an 8 mm wooden board for fixing to the walls) in different choices

Panoprey

EASY - OPPORTUNITY - VARIO

Available for



2-P001  
Aurora A019



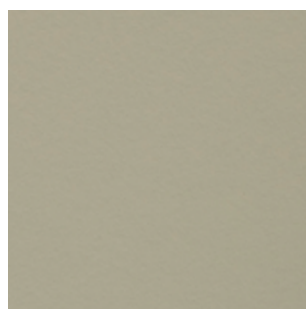
2-P002  
Polar White B012



2-P003  
White Lys B004



2-P004  
Oslo Blue B048



2-P005  
Eggshell C017



2-P006  
Cosmic Grey C038



2-P007  
Turtle Dove Grey G029



2-P008  
Mouse M047



2-P009  
Tuscany W034

35

## Coloured glass

*Cabin walls have a strong steel structure. The wall claddings can be chosen among coloured glass available in different colours*

Available for

**VARIO**



2-V004  
Yellow



2-V002  
Light Blue 006



2-V006  
Blue



2-V005  
Red



2-V001  
Pink



2-V003  
Grey

36

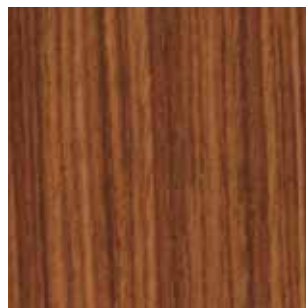
The walls cladding can be chosen among following veneered wood finishes to make your cabin a product of prestige

Veneered wood

VARIO Available for



2-W001  
Maple



2-W002  
Walnut



2-W003  
Mahogany



2-W004  
Cherry



2-W005  
Oak



2-W006  
Pear

Painted steel

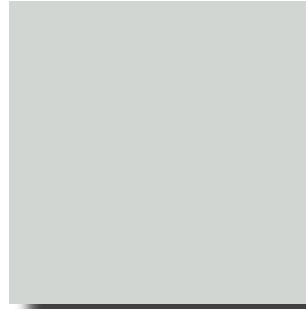
*Painted steel with the possibility of specific paintings in all RAL colors on request*

Available for

**EASY - ADAPTA - OPPORTUNITY - CARGO**



RAL 5017  
Traffic Blue



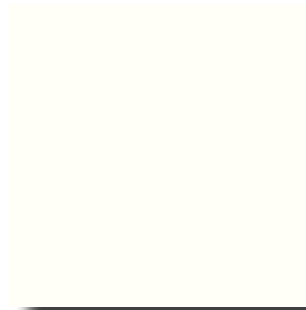
RAL 7035  
Light Grey



RAL 9006  
Aluminum



RAL 9007  
Grey Aluminum



RAL 9010  
Pure White



RAL 3003  
Ruby Red



RAL 2003  
Pastel Orange



RAL 5022  
Night Blue



RAL 7016  
Anthracite Grey

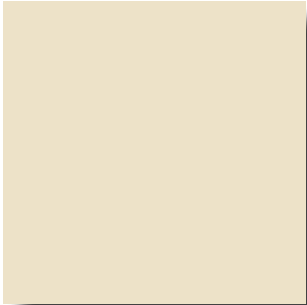
38

Wall finishes

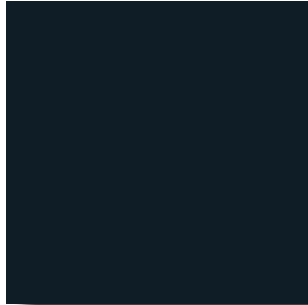


Painted steel

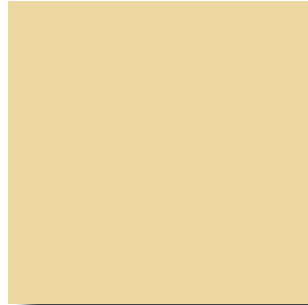
EASY - ADAPTA - OPPORTUNITY - CARGO Available for



RAL1013  
Oyster White



RAL 7021  
Black Grey



RAL 1014  
Ivory



RAL 7037  
Dusty Grey

The walls cladding can be chosen among following *Marble* materials in different colours and with suitable thicknesses for wall cladding

Marble

VARIO Available for



2-M001  
White Carrara



2-M002  
Portugal Pink



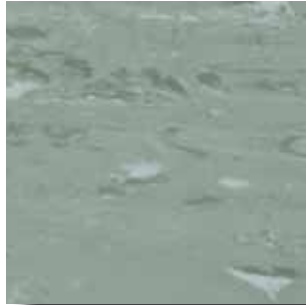
2-M003  
Yellow Siena

## Various PVC

All the Verri floors are strong and flexible, manufactured to the size and design of the cabin. Natural ventilation is solved in an elegant way. Floor cladding in different colours. See options and accessories for further range of materials



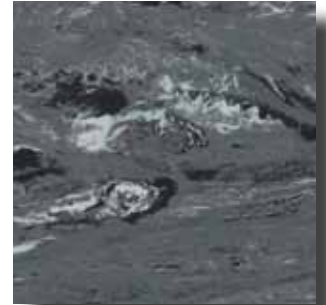
2-G010  
PVC Marmbled Grey



2-G011  
PVC Marmbled Green



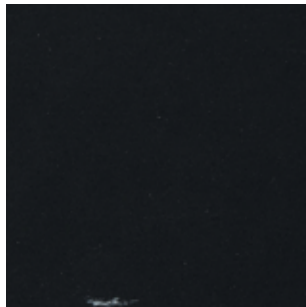
2-G012  
PVC Marmbled Ocre



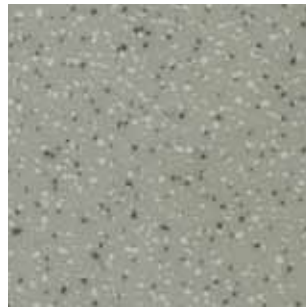
2-G014  
PVC Marmbled Dark Grey



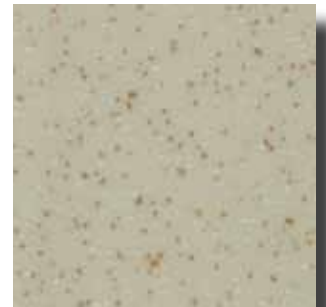
2-G016  
PVC Marmbled Light Blue



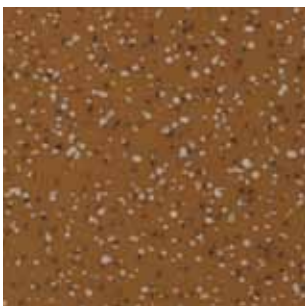
2-G017  
PVC Marmbled Black



2-G019  
PVC Speckled Grey



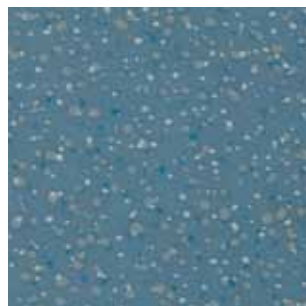
2-G020  
PVC Speckled Ivory



2-G021  
PVC Speckled Brown



2-G022  
PVC Speckled Black



2-G023  
PVC Speckled Light Blue



2-G026  
PVC Marmbled Red

40

# Floor finishes

Various PVC



2-G027  
PVC Marmbled Turtle



2-G001  
Light Grey



2-G002  
Blue



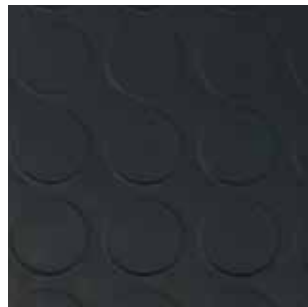
2-G003  
Brown



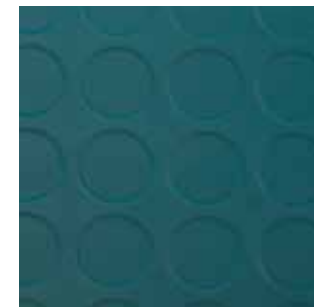
2-G004  
Red



2-G005  
Dark Grey



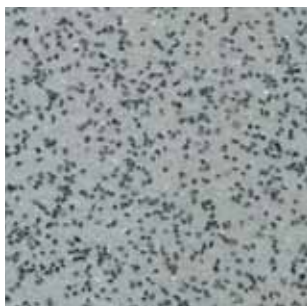
2-G006  
Black



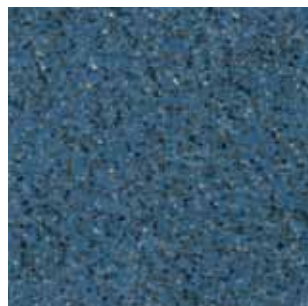
2-G007  
Green



2-G008  
White



2-G030  
ALTRO Cloud



2-G031  
ALTRO Blue

Various PVC



2-G032  
ALTRO Dolphin



2-G034  
ALTRO Midnight



2-G035  
ALTRO Black

42

Metal

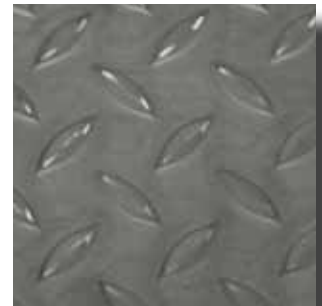
*Steel floors are available too*



2-G024  
Knurled Aluminum



2-G025  
Treadtex Inox



2-G029  
Chequered Stainless Steel

Floor finishes

*Wear resistant materials for floor cladding are very important for a good quality of the car.  
Composite stones represents a further alternative*

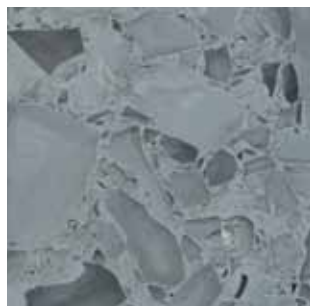
## Composite stones



2-R011  
Rocksolid 607



2-R012  
Rocksolid 617



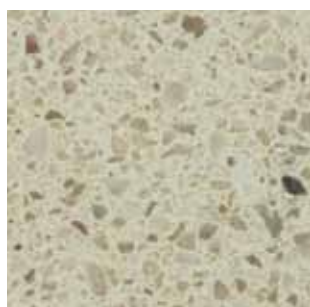
2-R013  
Crystalline 466



2-R014  
Rocksolid 671



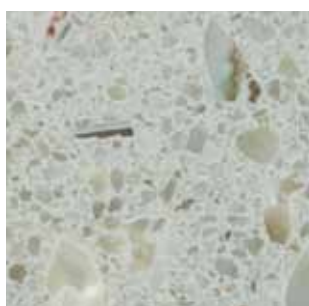
2-R015  
Rocksolid 677



2-R016  
Rocksolid 609



2-R017  
Rocksolid 630

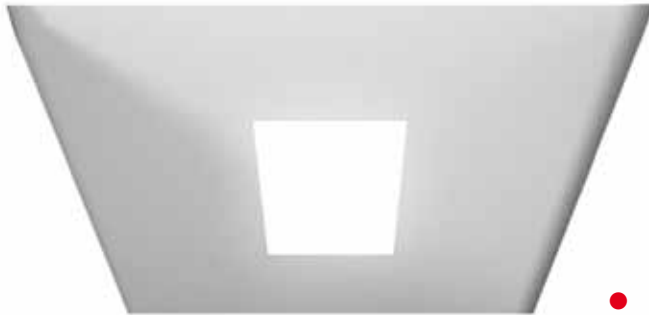


2-R018  
Rocksolid 616

The ceiling is an important part of the Verri cabin.

- It is designed and manufactured from quality sheet steel to meet the appropriate lift regulations
- It can be supplied with various lighting solutions to meet the required specifications
- It is designed to accept various designs of car door operators and accessories

## Embedded



### IL PPV

Embedded light Opal Polycarbonate type IL-42

### IL PGB

Embedded light white plastic grid type IL-42

### IL PGC

Embedded light chrome plastic grid type IL-42

### IL PGA

Embedded light aluminium grid type IL-42

### IL PPVS

Embedded light Opal Glass type IL-42

44

## Glass



IL 221



IL 222

All these ceilings are available in Skinplate (S), Satined Stainless Steel (XS) and Polished Stainless Steel (XL). Simply add the material code (S, XS, XL) to the ceiling code (e.g. to order IL 200 in Polished Stainless Steel, ask for IL 200XL)

Suspended



**IL 200**  
(available with LED too)



**IL 201**



**IL 203**



**IL 204**

45



**IL 205**

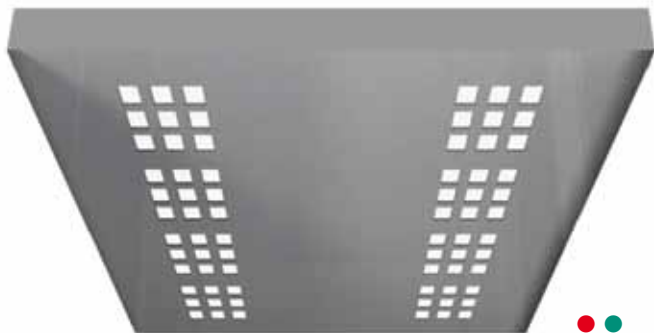


**IL 206**

● Not available for OPPORTUNITY

● Not available for CARGO

Suspended



IL 207



IL 208



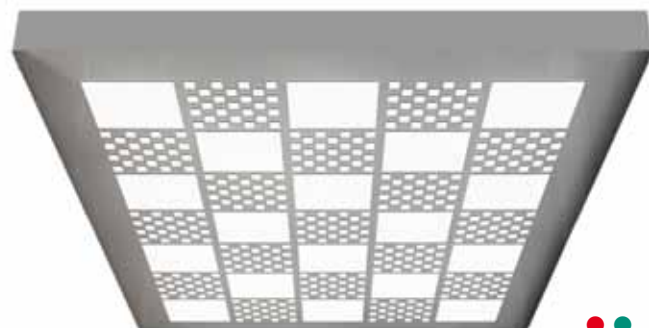
IL 209



IL 210



IL 211

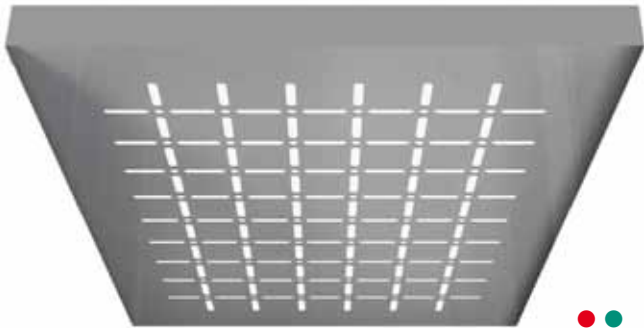


IL 212

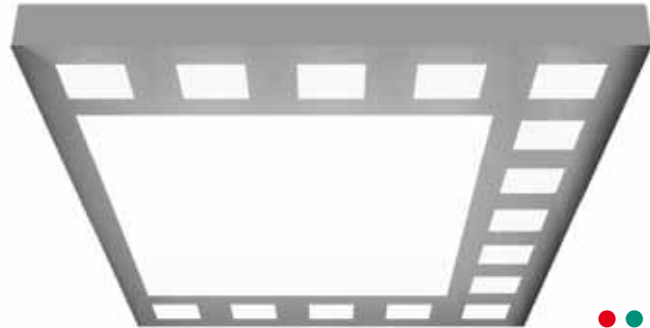
46



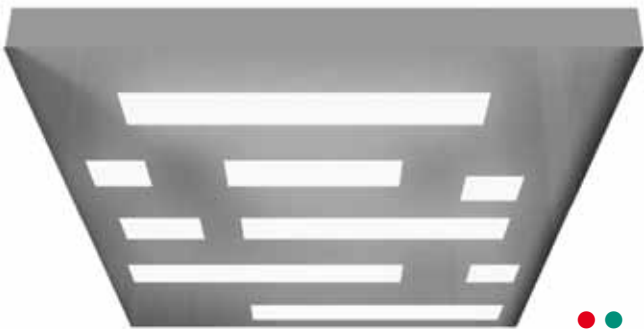
Suspended



IL 213



IL 215



IL 216



IL 217



IL 218



IL 219

47

● Not available for OPPORTUNITY

● Not available for CARGO

## Aluminium



COA60-8 (COA120-8)  
ALU handrail 60x8mm  
(120x8mm)

COA60P (COA120P)  
ALU handrail 60x8mm  
(120x8mm) with  
chamfered ends



48



COA40E  
ALU handrail, 40mm diam  
removable from outside

COA40L  
ALU handrail, 40mm  
diam with elbow holders





COX28I - COX40I - COX28E -  
COX40E

Polished stainless steel handrail  
28mm (or 40mm) diam. removable  
from inside (COX28I and COX40I)  
or outside (COX28E and COX40E)

COX28L (COX40L)

Polished stainless steel  
handrail, 28mm (40mm) diam.  
with elbow holders



COX28IC - COX40IC - COX28EC -  
COX40EC

Polished stainless steel handrail  
28mm (or 40mm) diam. with elbow  
ends, removable from inside  
(COX28IC and COX40IC) or outside  
(COX28EC and COX40EC)

COX28LC (COX40LC)

Stainless Steel handrail,  
28mm (40mm) diam. with  
curved ends, removable  
from inside



## Stainless steel

COX60-2

Polished stainless steel handrail  
60x20mm



COX40ICC

Polished Stainless steel handrail,  
40mm diam. with curved ends,  
removable from inside

## Wood

COL40I (COL40E)

Wood handrail, 40mm diam.  
removable from inside (outside)



COL40L

Wood handrail, 40mm diam.  
with elbow holders

COL40IC (COL40EC)

Wood handrail, 40mm diam.  
with curved ends, removable  
from inside (outside)



COL40LC

Wood handrail, 40mm diam.  
with curved ends, removable  
from inside

COF1002

Beech handrail 100x20mm



COL40ICC

Wood handrail, 40mm diam.  
with stainless steel curved ends,  
removable from inside

Various

Wide range of bumper rails available to meet safety and aesthetical requirements.

PC L100

Wood bumper rails, nut  
painted, 100x25mm



PC LX140

Wood bumper rails  
with stainless steel  
stripes 140x35 crws-2



PCG120

PVC black bumper  
rails 120x15mm



PC G75

PVC bumper rails  
75x67 without caps



PC P127  
PVC bumper rails  
127x30 with caps



PCA120  
Alu bumper rails 120x5mm



PC XS120  
Stainless steel grit  
180-240 bumper rails  
120x5mm



PC XRS150  
Bumper rails clad  
stainless steel grit 180-240  
150x20mm





ZCXS60 – ZCXS100 – ZCXS120

Satin skirting stainless steel  
60x5mm – 100x5mm –  
120x5mm

ZC AFXS100

Flush satin Stainless steel  
skirting grit 180-240 for cladded  
walls h 100mm

ZC AFXS100

Flush polished stainless steel  
skirting for cladded walls  
h 100mm



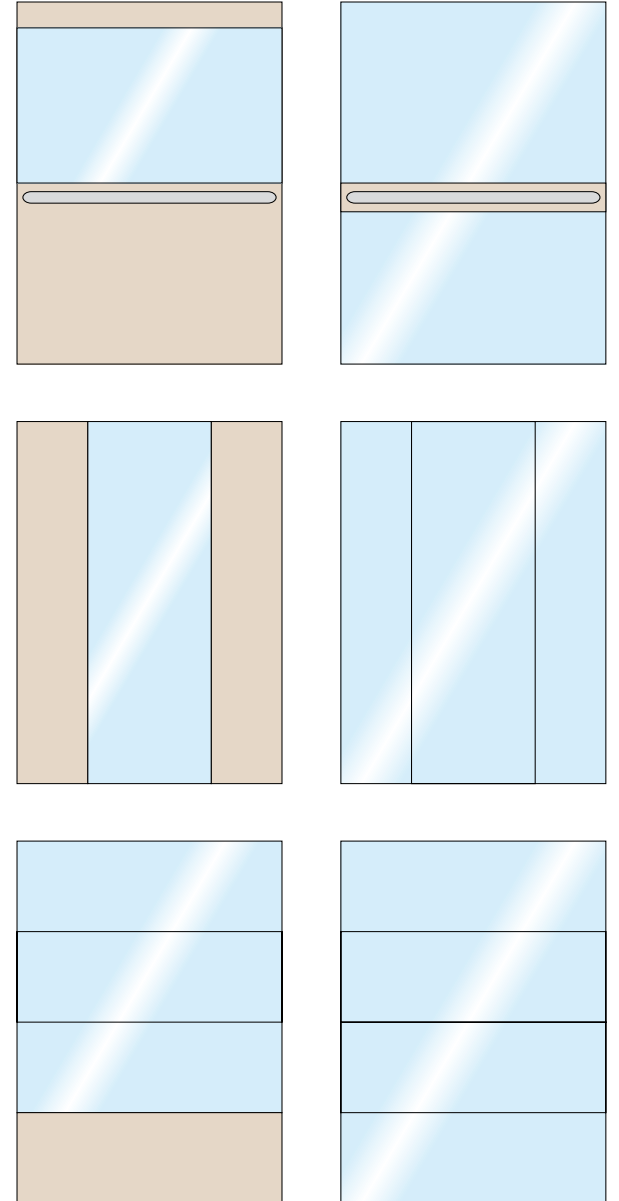




Wide range of mirror executions specified as follows:

- on half wall
- full wall
- panels

56

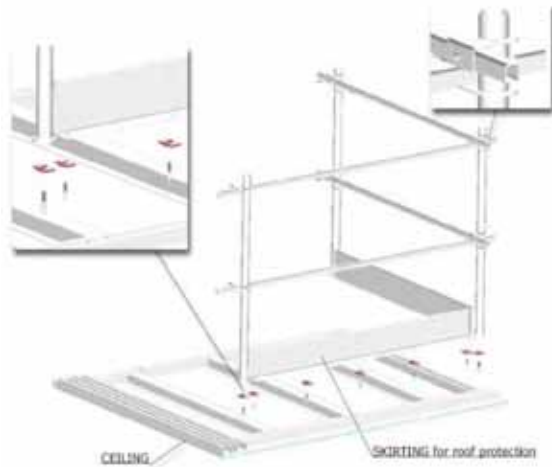


Mirror and glass



To meet the requirements of the market Verri has developed a special concept of glass wall named “Style”, fully framed with satin stainless steel. The glass wall matches with all kind of materials.

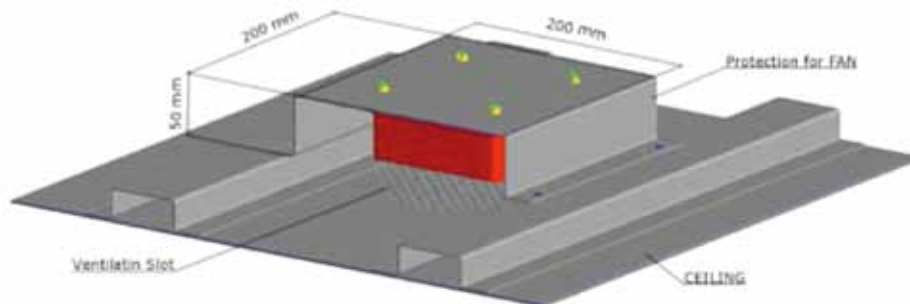
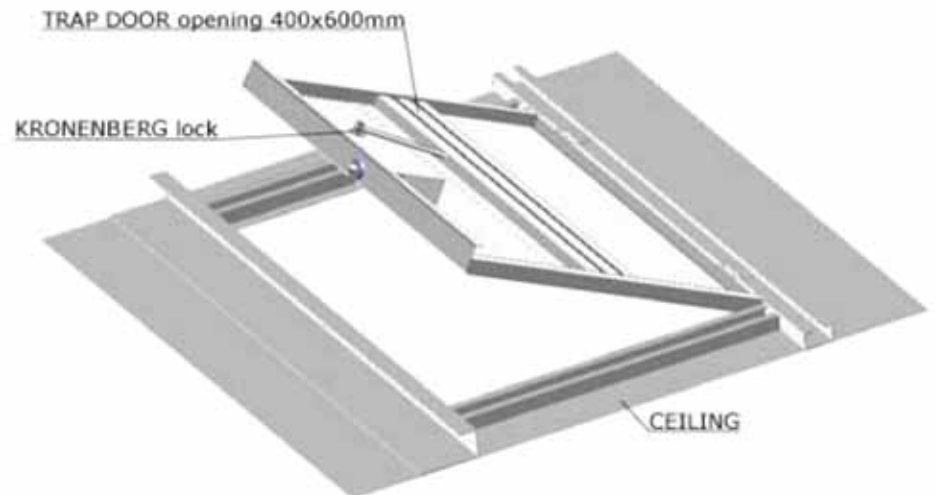
The assembly and the replacement of glass panels is easy and doesn't need any special tool.



A modular car top railing 700mm high can be applied on each side of cabin roof. Also available for panorama cars in stainless steel

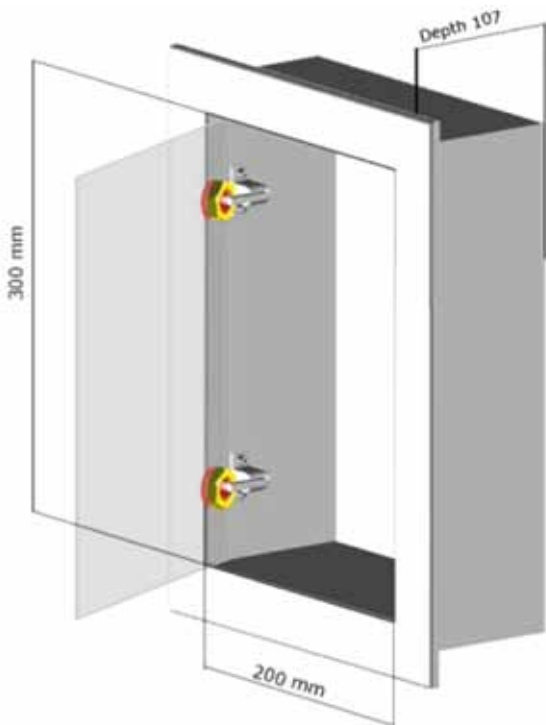
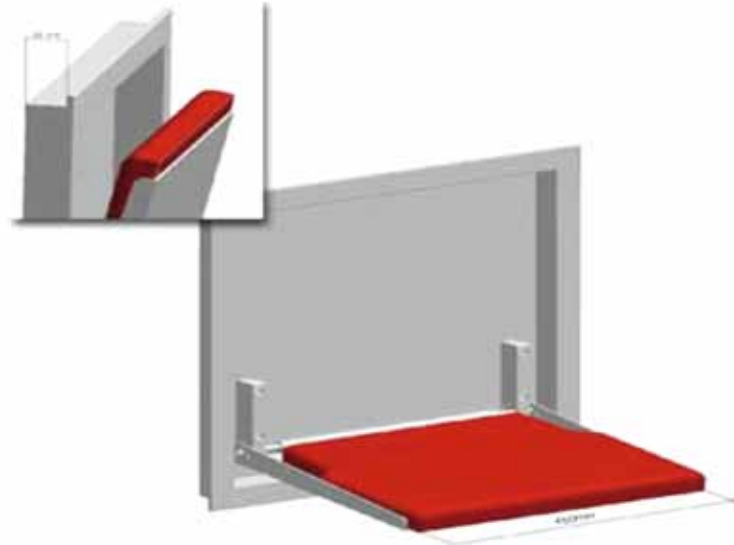
58

A trap door conforming to EN-81 with a special locking mechanism from outside of the ceiling can be supplied



Possible application of exhaust or blowing fan with low decibel

Available to be fixed on walls or embedded with stainless steel grit 180-240 niche



Available in aluminium or in stainless steel grit 180-240 with or without box door

**Anti-drumming**

To make the cabin sound proof it is possible to apply a special anti-drumming

## WALL FINISHES

	code	EASY	VARIO	ADAPTA	OPPORTUNITY	CARGO
<b>SKINPLATE</b>	2-K001	●		●		●
	2-K010	●		●		●
	2-K011	●		●	●	●
	2-K012	●		●	●	●
	2-K013	●		●	●	●
	2-K014	●		●	●	●
	2-K015	●		●	●	●
	2-K016	●		●	●	●
	2-K017	●		●	●	●
	2-K018	●		●	●	●
	2-K002	●		●		●
	2-K003	●		●		●
	2-K004	●		●		●
	2-K005	●		●		●
	2-K006	●		●		●
	2-K008	●		●		●
	2-K009	●		●		●
	2-K019	●		●		●
	<b>PANOPREY</b>	2-P001	●	●		●
2-P002		●	●		●	
2-P003		●	●		●	
2-P004		●	●		●	
2-P005		●	●		●	
2-P006		●	●		●	
2-P007		●	●		●	
2-P008		●	●		●	
2-P009		●	●		●	
<b>PLASTIC LAMINATE</b>	2-L009	●	●		●	
	2-L010	●	●			
	2-L012	●	●		●	
	2-L013	●	●		●	
	2-L014	●	●			
	2-L016	●	●			
	2-L017	●	●			
<b>PAINTED STEEL</b>	RAL 5017	●		●	●	●
	RAL 7035	●		●	●	●
	RAL 9006	●		●	●	●
	RAL 9007	●		●	●	●
	RAL 9010	●		●	●	●
	RAL 3003	●		●	●	●
	RAL 2003	●		●	●	●
	RAL 5022	●		●	●	●
	RAL 7016	●		●	●	●
	RAL 1013	●		●	●	●
	RAL 7021	●		●	●	●
	RAL 1014	●		●	●	●
	RAL 7037	●		●	●	●

## WALL FINISHES

	code	EASY	VARIO	ADAPTA	OPPORTUNITY	CARGO
<b>MARBLE</b>	2-M001		●			
	2-M002		●			
	2-M003		●			
<b>STAINLESS STEEL</b>	2-S001	●	●	●	●	●
	2-S002	●	●	●	●	●
	2-S003	●	●	●	●	●
	2-S004	●	●	●	●	●
	2-S005	●	●	●	●	●
	2-S006	●	●	●	●	●
	2-S007	●	●	●	●	●
	2-S008	●	●	●	●	●
	2-S009	●	●	●	●	●
	2-S010	●	●	●	●	●
	2-S011	●	●	●	●	●
	2-S012	●	●	●	●	●
	2-S013	●	●	●	●	●
	2-S014	●	●	●	●	●
	2-S015	●	●	●	●	●
	2-S016	●	●	●	●	●
	2-S017	●	●	●	●	●
	2-S018	●	●	●	●	●
	2-S019	●	●	●	●	●
	2-S021	●	●	●	●	●
2-S024	●	●	●	●	●	
2-S029	●	●	●	●	●	
<b>COLORED GLASS</b>	2-V001		●			
	2-V002		●			
	2-V003		●			
	2-V004		●			
	2-V005		●			
	2-V006		●			
<b>WOOD VENEERED</b>	2-W001		●			
	2-W002		●			
	2-W003		●			
	2-W004		●			
	2-W005		●			
	2-W006		●			

## FLOOR FINISHES

	code	EASY	VARIO	ADAPTA	OPPORTUNITY	CARGO
<b>VARIOUS</b>	2-G001	●	●	●		●
	2-G002	●	●	●		●
	2-G004	●	●	●		●
	2-G005	●	●	●		●
	2-G006	●	●	●		●
	2-G008	●	●	●		●
	2-G009	●	●	●		●
	2-G010	●	●	●	●	●
	2-G011	●	●	●	●	●
	2-G012	●	●	●	●	●
	2-G014	●	●	●	●	●
	2-G016	●	●	V	●	●

## FLOOR FINISHES

	code	EASY	VARIO	ADAPTA	OPPORTUNITY	CARGO
VARIOUS	2-G017	●	●	●	●	●
	2-G019	●	●	●	●	●
	2-G020	●	●	●		●
	2-G021	●	●	●	●	●
	2-G022	●	●	●	●	●
	2-G023	●	●	●	●	●
	2-G026	●	●	●	●	●
	2-G027	●	●	●		●
	2-G030	●	●	●		●
	2-G031	●	●	●		●
	2-G032	●	●	●		●
	2-G034	●	●	●		●
	2-G035	●	●	●		●
METAL	2-G024		●	●		●
	2-G025		●	●		●
	2-G029		●	●		●
COMPOSITE STONE	2-R011	●	●	●	●	
	2-R012	●	●	●	●	
	2-R013	●	●	●	●	
	2-R014	●	●	●	●	
	2-R015	●	●	●	●	
	2-R016	●	●	●	●	
	2-R017	●	●	●	●	
	2-R018	●	●	●	●	

## CEILING

	code	EASY	VARIO	ADAPTA	OPPORTUNITY	CARGO
EMBEDDED	IL-42 PPV		●	●		●
	IL-42 PGB		●	●		●
	IL-42 PGC		●	●		●
	IL-42 PGA		●	●		●
	IL-42 PPVS		●	●		●
SUSPENDED (*)	IL 200	●	●	●	●	●
	IL 201	●	●	●	●	●
	IL 203	●	●	●	●	●
	IL 204	●	●	●		●
	IL 205		●	●		●
	IL 206		●	●		●
	IL 207		●	●		
	IL 208		●	●		
	IL 209		●	●		
	IL 210	●	●	●		
	IL 211		●	●		
	IL 212		●	●		
	IL 213		●	●		
	IL 215		●	●		
	IL 216		●	●		
IL 217		●	●			
IL 218		●	●			
IL 219		●	●			

(\*) Options available

S - skinplate

XS - satined stainless steel

XL - polished stainless steel



## CEILINGS

	code	EASY	VARIO	ADAPTA	OPPORTUNITY	CARGO
GLASS	IL 221	●	●	●		
	IL 222	●	●	●		

## HANDRAILS

	code	EASY	VARIO	ADAPTA	OPPORTUNITY	CARGO
ALUMINUM	CO A60-8		●	●		●
	CO A120-8		●	●		●
	CO A60P		●	●		●
	CO A120P		●	●		●
	CO A40E		●	●		●
	CO A40L		●	●		●
STAINLESS STEEL	CO X40I	●	●	●		●
	CO X28I	●	●	●		●
	CO X40E	●	●	●	●	●
	CO X28E	●	●	●		●
	CO X40L	●	●	●		●
	CO X28L	●	●	●		●
	CO X40IC	●	●	●		●
	CO X40EC	●	●	●	●	●
	CO X28IC	●	●	●		●
	CO X28EC	●	●	●		●
	CO X40LC	●	●	●		●
	CO X28LC	●	●	●		●
	CO X60-2			●		●
	CO X40ICC			●	●	●
WOOD	CO L40I		●	●		
	CO L40E		●	●		
	CO L40L		●	●		
	CO L40IC		●	●		
	CO L40EC		●	●		
	CO L40LC		●	●		
	CO F100 2			●		
	CO L40ICC			●	●	

## BUMPER RAILS

	code	EASY	VARIO	ADAPTA	OPPORTUNITY	CARGO
WOOD	PC L100		●	●		●
	PC LX140		●	●		●
PVC	PC G120		●	●		●
	PC G75		●	●		●
	PC P127		●	●		●
ALUMINUM	PCA 120		●	●		●
STAINLESS STEEL	PC XS120		●	●		●
	PC XRS150		●	●		●

## SKIRTING BOARD

	code	EASY	VARIO	ADAPTA	OPPORTUNITY	CARGO
STAINLESS STEEL	ZC XS60	●	●	●		●
	ZC XS100	●	●	●		●
	ZC XS120	●	●	●		●
	ZC AFXS100		●	●		
	ZC AFXD100			●	●	





Reference gallery



MERK / SERONO  
> Genève



66





SUNDERLAND MUSEUM  
AND ART GALLERY  
> Sunderland



OFFICES

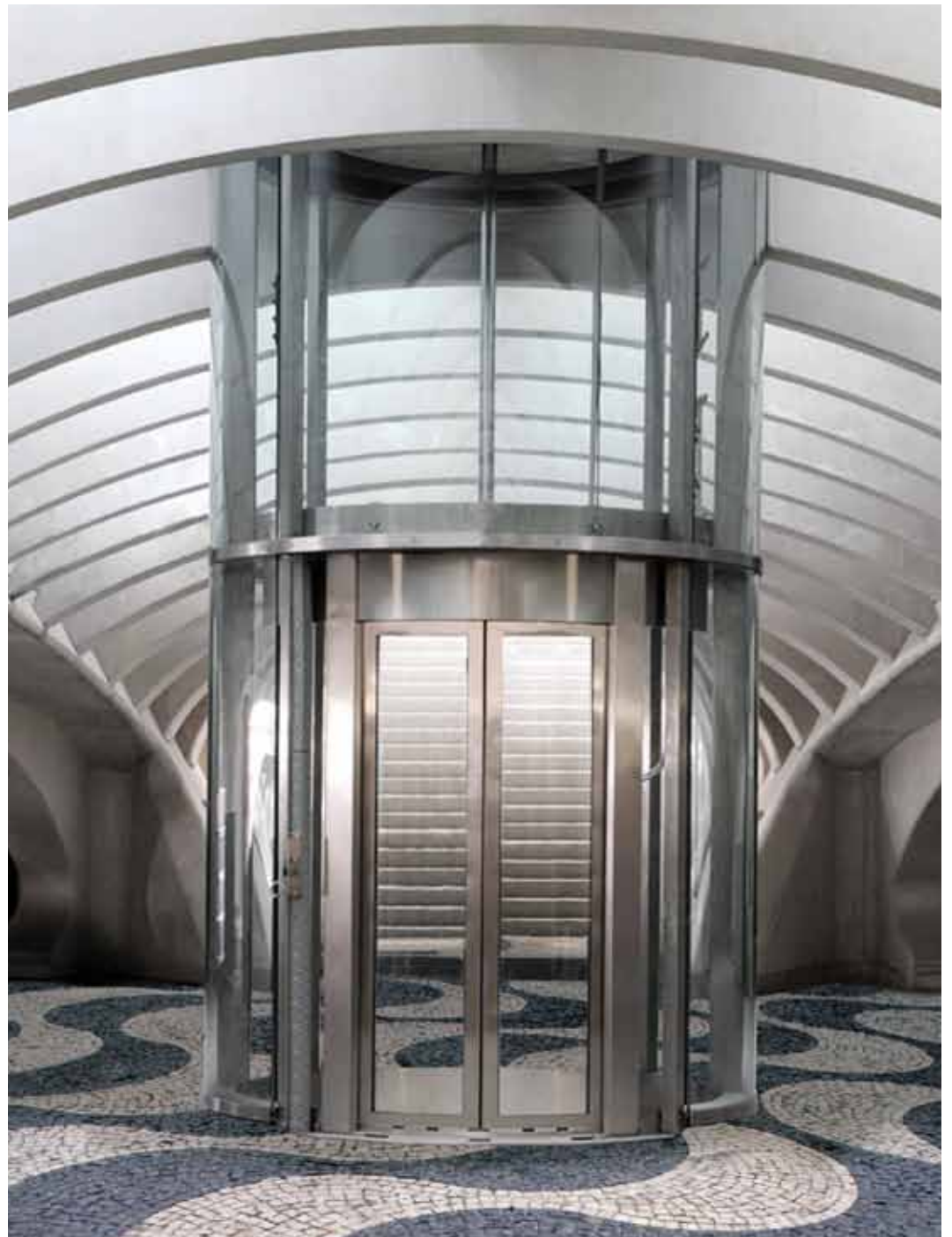


67

TGV  
> Liège



68





69



PORSCHE RETAIL  
> Wiesbaden



Reference

NINA TOWER  
> Hong Kong



70







HOTEL  
> Baden-Baden



HOTELS



71

Reference



**SUBSTITUTIONS AND/OR CHANGES CAN BE MADE WITHOUT NOTICE**





## Verri

Via dei Piazzoli, 1/5

24040 Suisio, Bergamo, Italy

Tel. +39 035 49 36 111 - Fax. +39 035 90 24 51

e-mail [info@verri.sematic.com](mailto:info@verri.sematic.com)

[www.sematic.com](http://www.sematic.com)